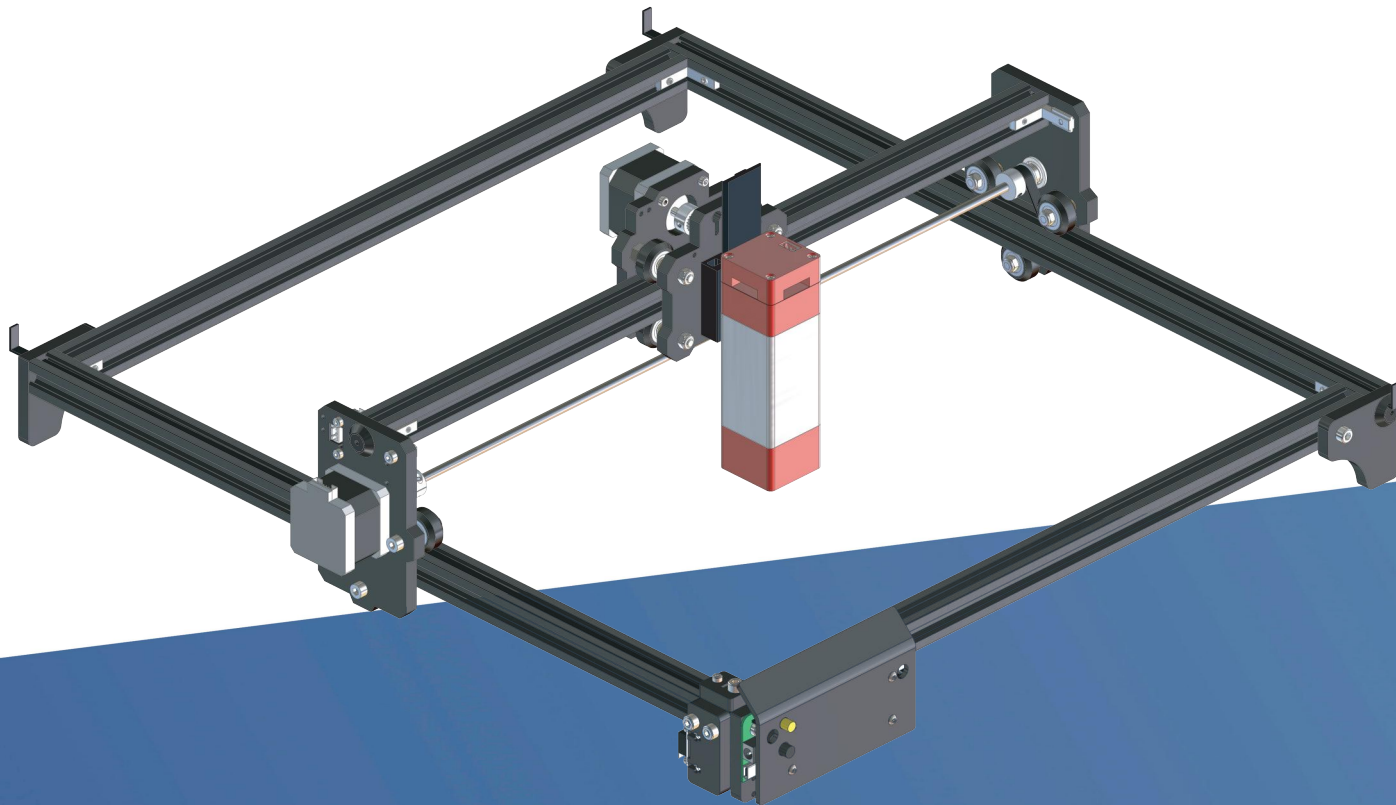


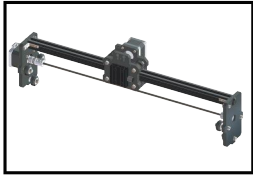
4040

Laser Engraving Machine

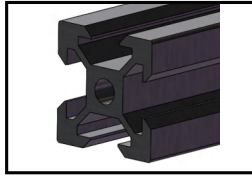


English
Deutsch

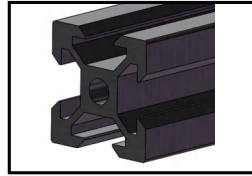
Directory Listing



X-axis Set*1



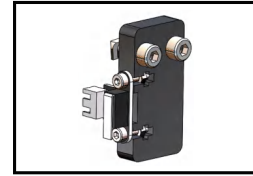
2020V/540mm * 2 (L)



2020V/467mm * 2 (S)



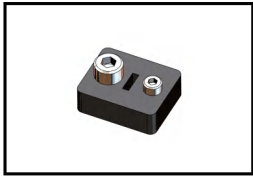
Controller*1



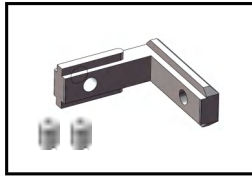
Y-axis Limit Set*1



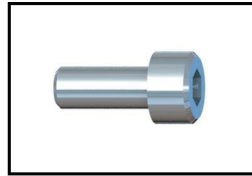
Bottom Corner*3



Belt Pressure Block*1



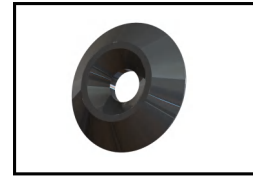
L-Shape Connector * 4



Screws M5-12*5



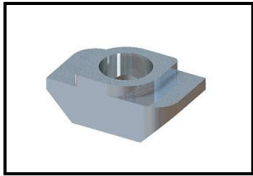
Magnetic Ring * 1



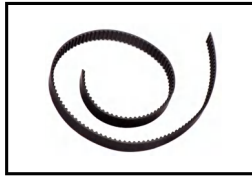
Gasket*3



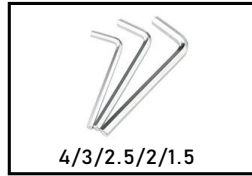
10/8
Open End Wrench * 2



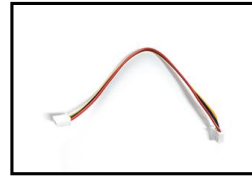
M5 T-nut*4



Belt * 2



4/3/2.5/2/1.5
Socket Wrench * 4



Y-Axis Limit Wire*1



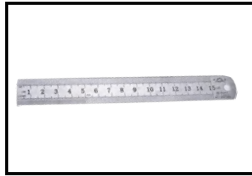
Cable Ties * 12



USB Cable *1



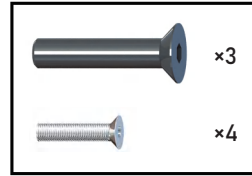
Wire*1



Ruler 15cm*1



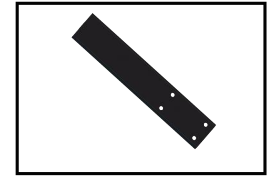
USB Flash Drive*1



Screws M5-20*3
Screw M3-6*4

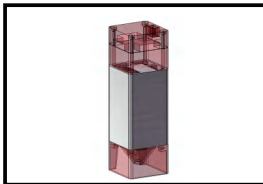


12V 5A Power*1

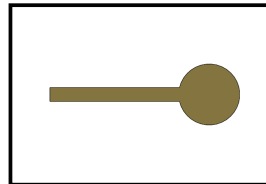


C-Type Lift*1

Optional:



40mm Type Laser*1

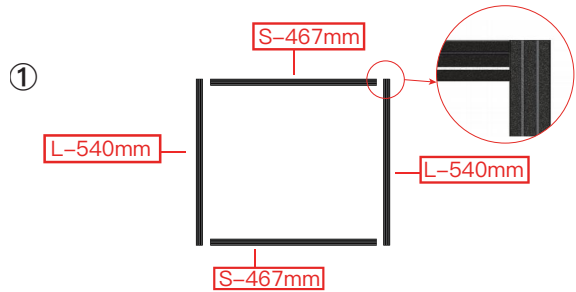


Fixed Focus Column*1



Glasses*1

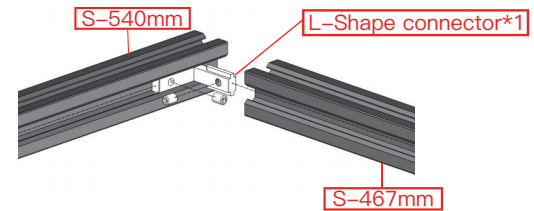
Installation Steps



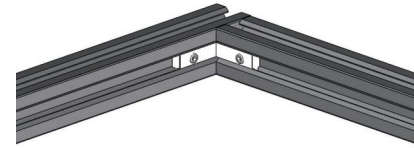
1: As above show, Frame first and Longer profiles on the left, shorter on the front and back. Connect with L-Shape connector at the corner.



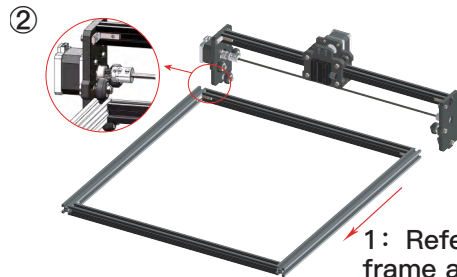
3: The L-Shape connector is finished through the groove of the aluminum profile and then fixed with



2: First put the L-Shape connector into the groove of the aluminum profile, and then fix it with screws.



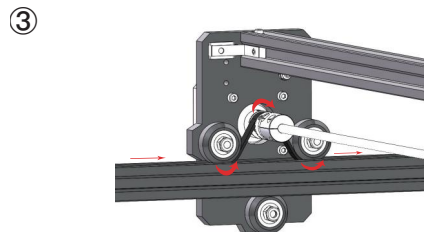
4: Done, Other 3 corners same as this one.



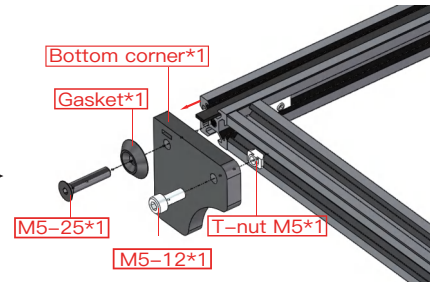
1: Refer above, combine the frame and X axis set together.



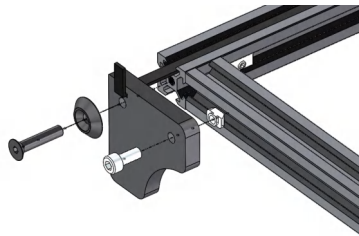
2: Done.



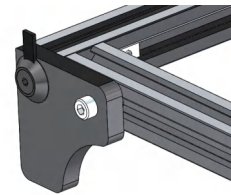
1: Please pass the synchronous belt under the first roller in the direction shown in the diagram, then go around the top of the synchronous wheel before passing under the second roller.



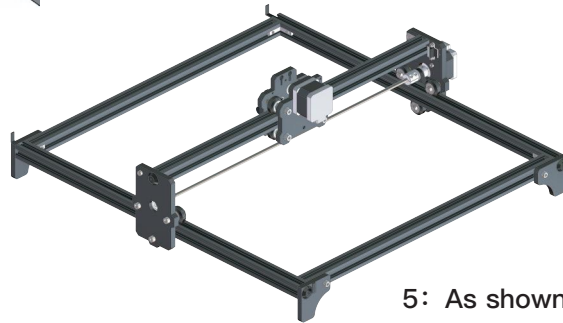
2: Please pull the belt out of the slot in the aluminum profile and thread it through the rectangular cutout in the bottom corner then assemble the bottom corner.



3: Please thread the belt through the rectangular hole in the bottom corner and fix it with a nut.

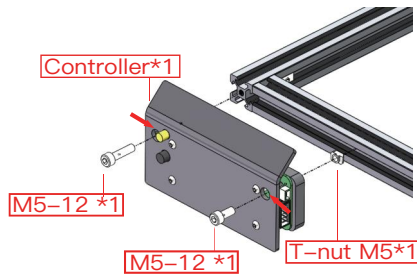


4: As picture show, the belt is successfully fixed. Please fix the rest with the same operation.



5: As shown,4 bottom corners done.

④

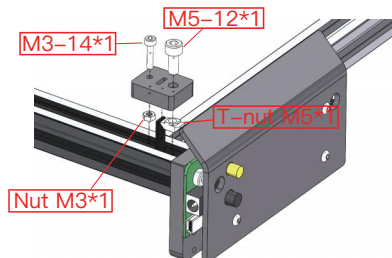


1: It is same way to fixed controller and bottom corner,please refer to the picture.

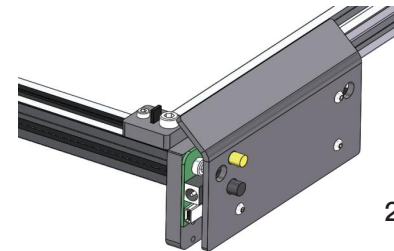


2: Controller done.

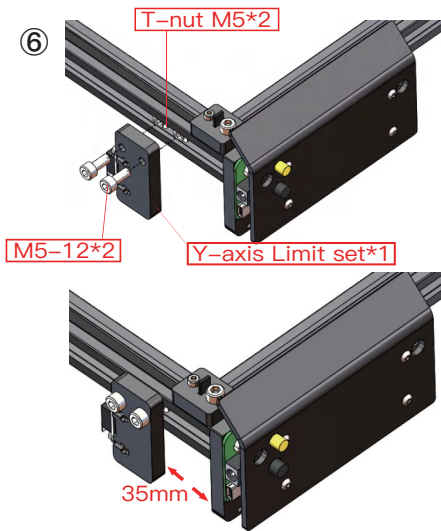
⑤



1: Insert the timing belt into the rectangular cutout on the fixing block, fix the acrylic block to the aluminum profile with M5 screws, and press the timing belt with M3



2: As shown,done.

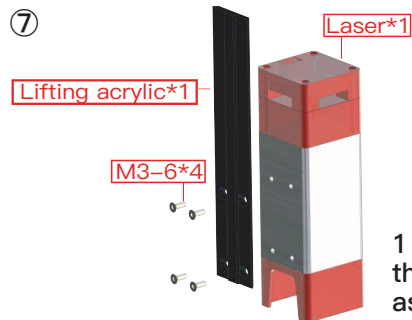


⑥
 1: Please install the Y-axis limit switch assembly next to the control board and fixed it with screws.

2: The Y-axis limit installation is completed, note: the distance between the 40mm type laser and the Y-axis limit switch module is 35mm.



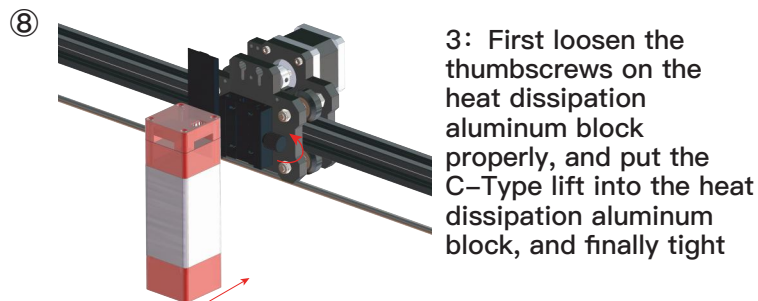
3 :Assemble done.



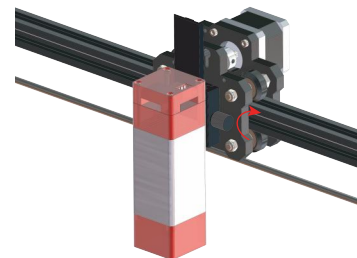
⑦
 1: Please connect the laser to the C-Tpye lifting with screws as shown in the picture.



2: Done.



⑧
 3: First loosen the thumbscrews on the heat dissipation aluminum block properly, and put the C-Type lift into the heat dissipation aluminum block, and finally tight



4: Done,then up and down movement of the laser can be adjusted by loosening and tightening the thumbscrews .

⑨



Safety Guide



Caution: Avoid eye or skin exposure to direct radiation.



Away from children.



Always wear protective glasses when use the machine.



Prohibited from use in flammable objects or gases.



In case of emergency, cut off the power immediately.



Shutdown steps : When you are not using the machine, first cut off the power, then turn off the software, at last dial out the USB cable.

Connecting Line

